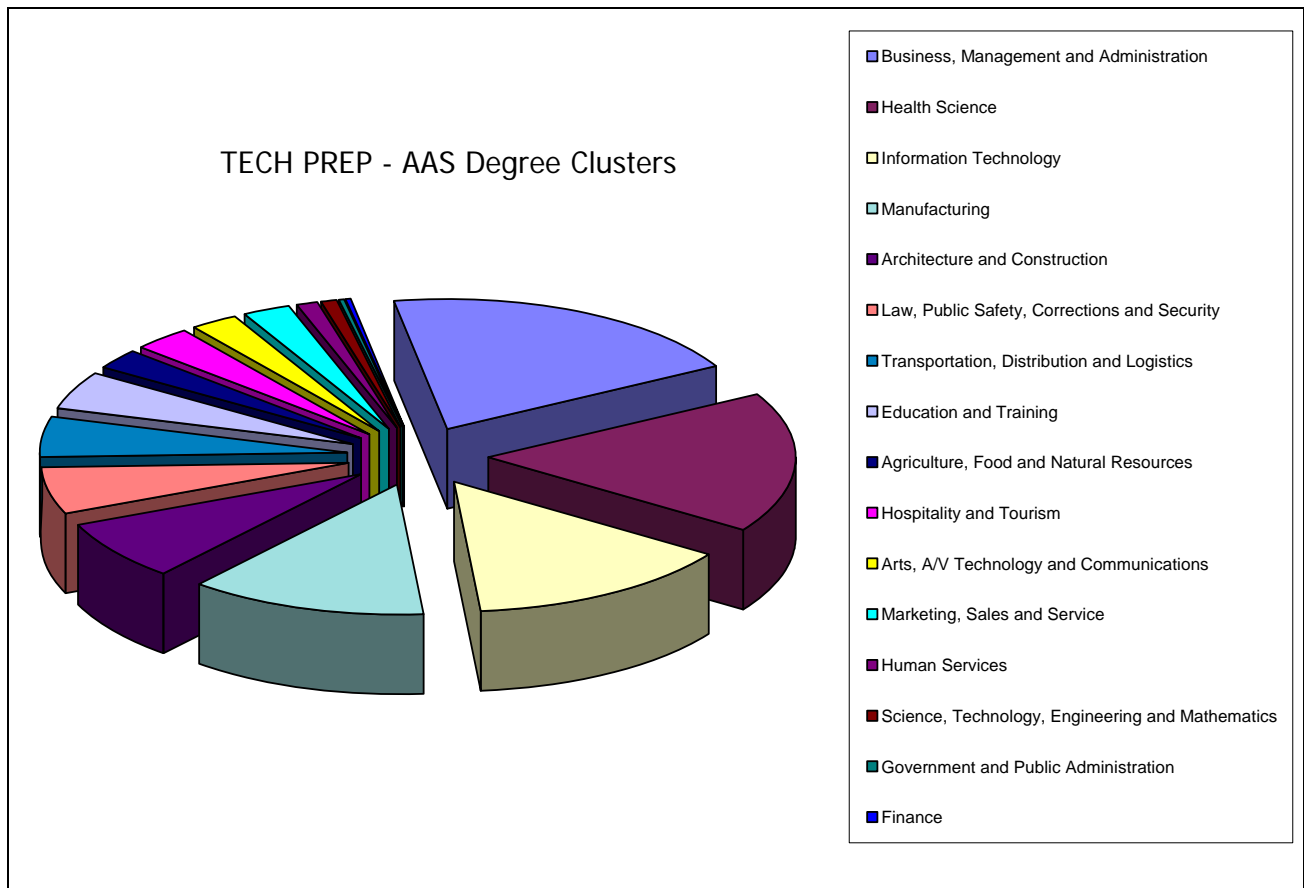


## Tech Prep Statewide Data 2007 - 2008

Fifty-eight percent of the state's 1873 Associate of Applied Science (AAS) degree programs in community and technical colleges are approved as Tech Prep by the Texas Higher Education Coordinating Board.\* Of the Tech Prep Programs with articulation agreements tracked in the Tech Prep Articulation Agreement database\*\*:

- 160 are Business, Management, Administration (19.7%)
- 142 are Health Science (17.5%)
- 115 are Information Technology (14.1%)
- 103 are Manufacturing (12.7%)

representing over half of all AAS programs in Texas in 2007.

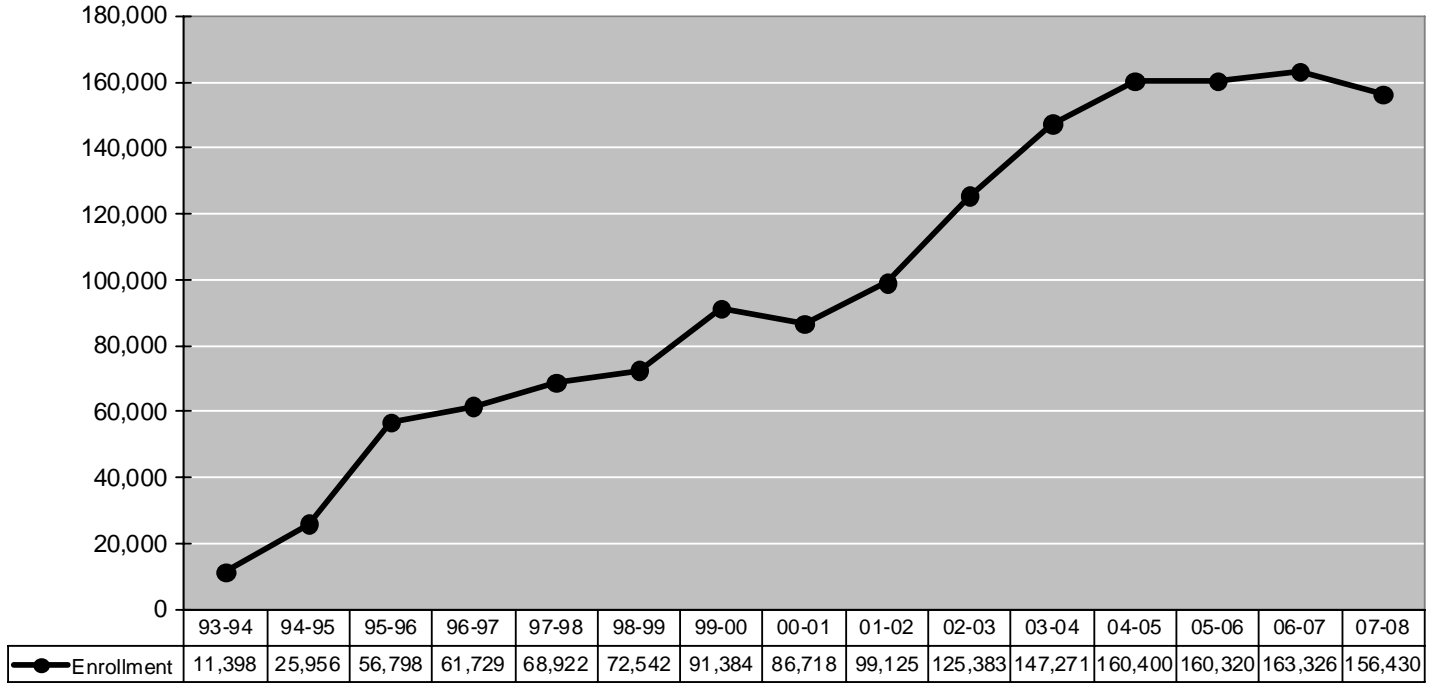


Eighty-nine percent (860) of the state's public school districts with high schools have one or more Tech Prep program articulation agreements with one or more colleges.

\* Source: Texas Higher Education Coordinating Board Degree Program (Clearinghouse) Awards, April 2008

\*\*Source: Tech Prep Articulation Agreement Database, April 2008

## Tech Prep Enrollment Grades 9-12 State of Texas

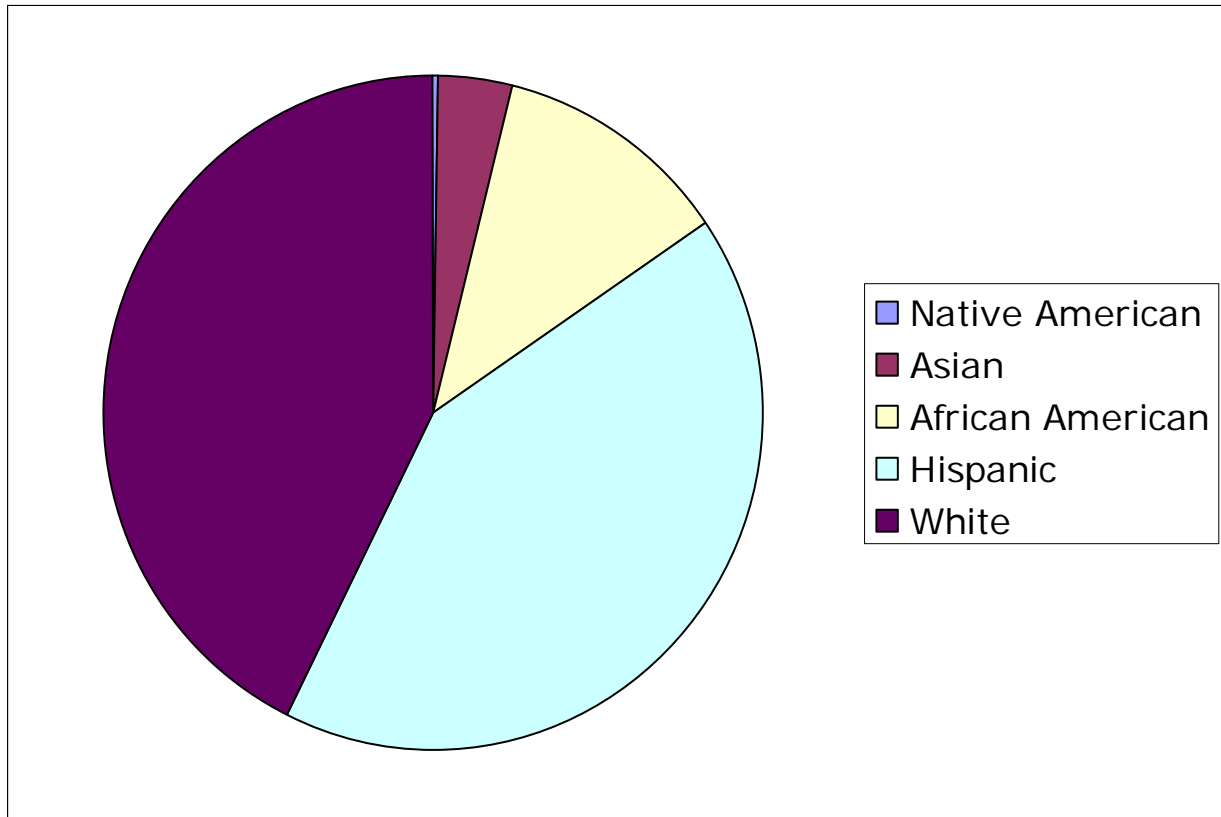


Source: Texas Education Agency – PEIMS

Note: Masking of data may lead to slight discrepancies in enrollment counts.

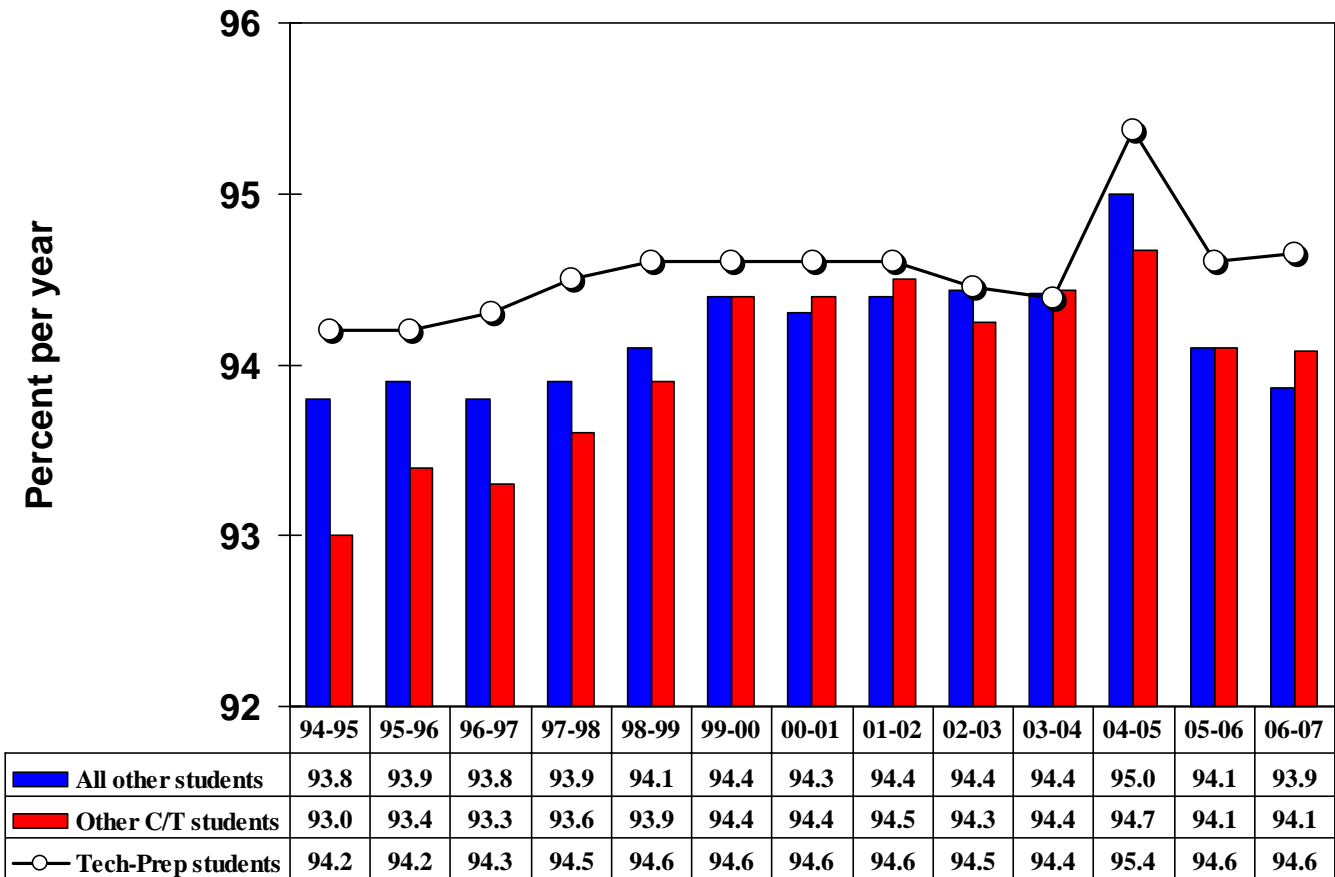
## Tech Prep Demographics Fall 2007

<b>Total</b>	<b>156,430</b>	<b>% of Total</b>
Native American	587	0.4%
Asian	5,519	3.5%
African American	18,382	11.8%
Hispanic	64,822	41.4%
White	67,120	42.9%
Females	78,231	50.0%
Males	78,199	50.0%
Special Ed*	15,262	9.8%
At Risk*	73,726	47.1%
Bilingual/ESL*	5,076	3.2%
Economically Disadvantaged*	66,503	42.5%
*May include duplicate count - will not equal 100% Note: Masking of data may lead to slight discrepancies in enrollment counts.		



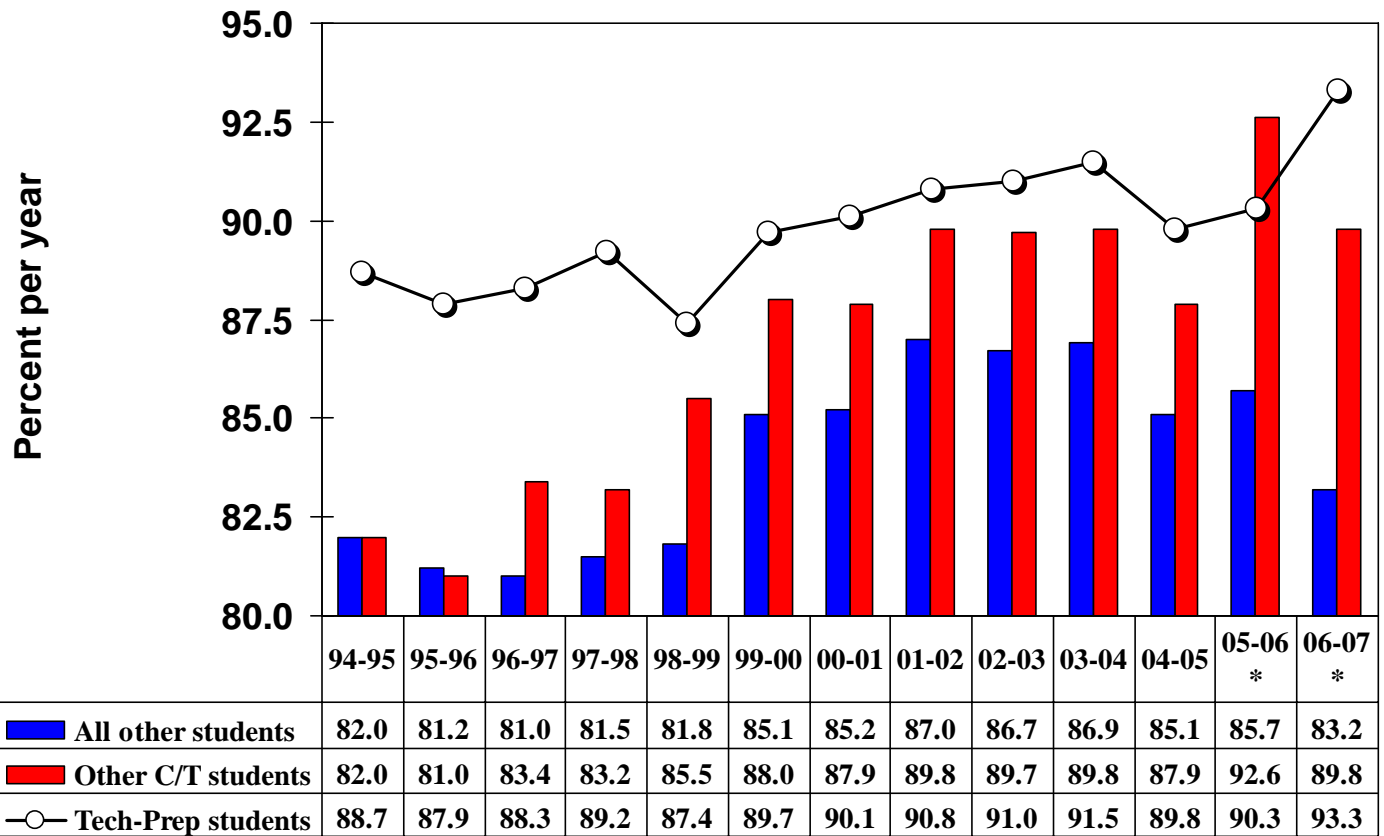
Source: Texas Education Agency

## Attendance Rates State of Texas, Grades 9-12



Source: Texas Education Agency

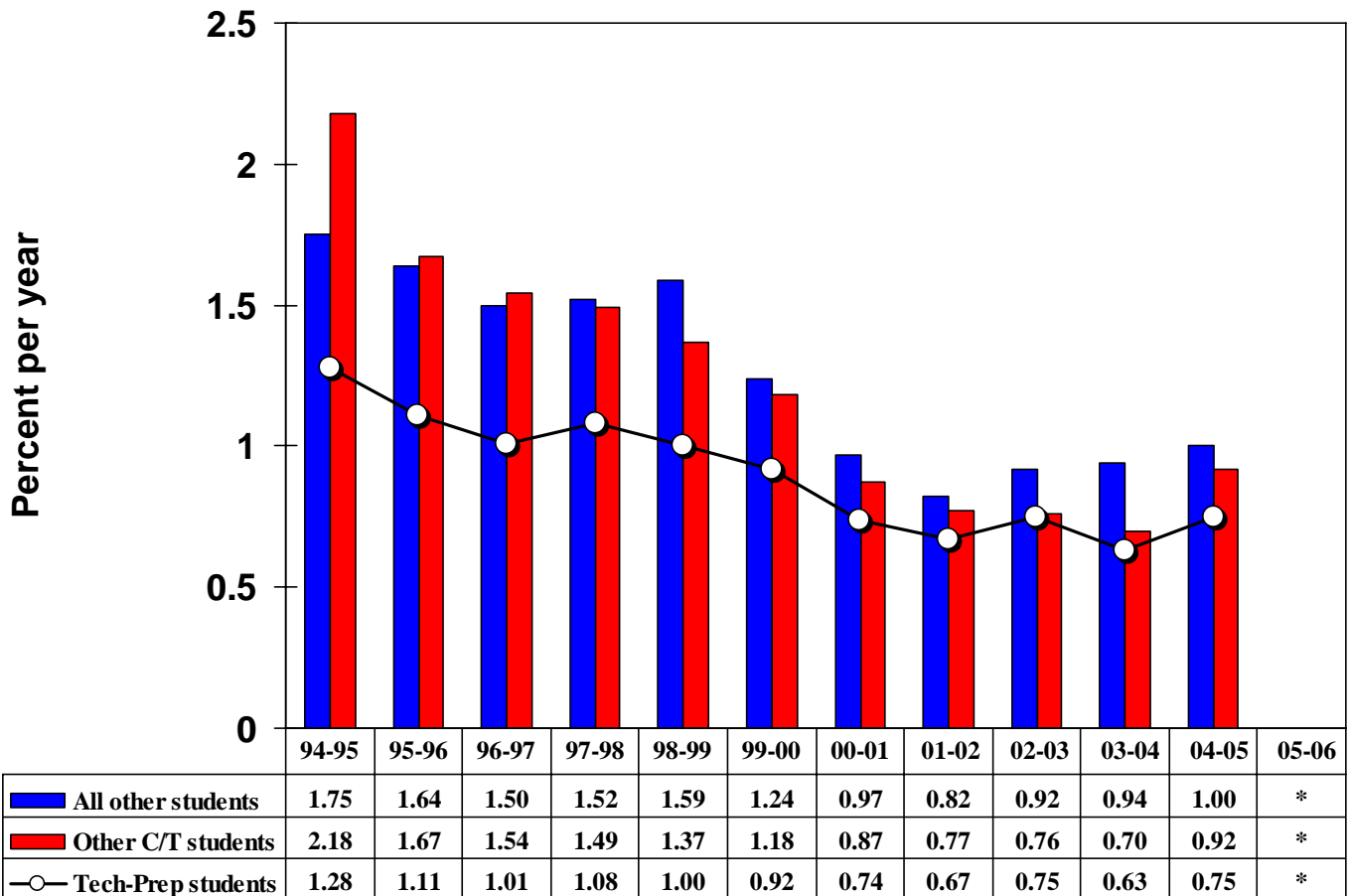
## Graduation Rates State of Texas



**\* NOTE: 2005-2006 and 2006-2007 data began new baseline which utilized a revised formula to calculate data.**

Source: Texas Education Agency

## Drop Out Rates State of Texas



\* pending receipt of data

Source: Texas Education Agency

# Potential Cost Savings for Tech Prep College Students and Their Families

For most of us there is little question about the value of Tech Prep as a significant educational force in the State of Texas. Even though we, as Tech Prep administrators, inherently know the value that the Tech Prep initiative brings to the students and families of the state, it is often difficult to quantify this value. A set of analyses have been developed at both the Tech Prep Consortium and the State levels to provide further support for the validity of the Tech Prep initiative in the State of Texas.

The basic formula is:

$$\text{COLLEGE COSTS} = \text{TUITION} + \text{BOOKS}$$

The assumptions and definitions applied to this formula are as follows:

- Tech Prep students take a coherent sequence of courses totaling 3 high school units (or more)
- On average, these 3 units can be articulated as 3 college courses or 9 semester credit hours (SCH)
- The Tech Prep Consortium *average* Cost per Semester Credit Hour (*ConsortiumCost/SCH*) is calculated by taking the *average* Total/SCH\* for the Community Colleges in that Consortium.

Therefore, on average, the potential tuition saved for a Tech Prep student going into college in Texas is:

$$\text{TUITION} = 9 * \text{ConsortiumCost/SCH}$$

In addition to tuition, book costs must also be included in potential cost savings:

- On average, each course requires 1 book
- On average, each book costs \$100

$$\text{BOOKS} = 3 * \$100 = \$300$$

Using the basic formula, each Tech Prep student in the state of Texas can save:

$$\text{COLLEGE COSTS} = 9 * \text{ConsortiumCost/SCH} + \$300$$

This College Cost Savings estimate can be applied to various Tech Prep populations. However, for the current analyses, 2007 – 2008 Tech Prep Seniors will be considered. For 2007 – 2008, Texas Tech Prep Senior Enrollment of 54,181 students represents 34.6% of the total 9-12 Tech Prep Enrollment of 156,430 students for the state.

2007-2008 Tech Prep Seniors **	Average College Costs / Student	Potential Savings for Tech Prep Seniors
54,181	\$859	\$45,882,336

\* Source: Total/SCH for TSTC, Texas State Technical College Website, April, 2008; Total/SCH for Southeast Texas (Lamar University), Lamar University Website, April, 2008; for all other Community Colleges, TACC Survey, Last Updated 10/26/07, 50 of 50 colleges; tacc.org website.

Note: *Total/SCH* is:

- the *average* \$\$/SCH tuition and fees per credit hour for each Community College
- calculated for a student enrolled for 12 semester credit hours including one laboratory course
- rounded to the nearest dollar

\*\* Source: TEXAS EDUCATION AGENCY

# Potential Cost Savings for Tech Prep Students and Their Families Seniors 2007 – 2008

## BY CONSORTIUM

### ASSUMPTIONS:

*College Costs = Tuition + Books*

*Tuition = 9 \* ConsortiumCost/SCH*

where ConsortiumCost/SCH = average Total/SCH\* for the consortium

*Books = \$300*

Consortium	TP Senior Enrollment **	College Costs / Consortium	Total Potential Savings
Alamo	2,104	840	\$1,767,360
Brazos Valley	458	885	\$405,330
Capital Area	2,062	822	\$1,694,964
Central Texas	856	831	\$711,336
Coastal Bend	1,474	885	\$1,304,490
Concho Valley	764	813	\$621,132
Deep East Texas	639	651	\$415,989
East Texas	1,952	813	\$1,586,976
Global EDGE	2,068	642	\$1,327,656
Golden Crescent	612	759	\$464,508
Gulf Coast	11,594	723	\$8,382,462
Heart of Texas	666	930	\$619,380
North Central Texas	6,972	723	\$5,040,756
North Texas	879	831	\$730,449
Permian Basin	978	795	\$777,510
Rio Grande Valley	6,085	1236	\$7,521,060
South Plains	1,786	894	\$1,596,684
South Texas	2,128	912	\$1,940,736
Southeast Texas	1,129	1452	\$1,639,308
STAR (Middle Rio Grande)	590	903	\$532,770
Texoma	2,534	705	\$1,786,470
Top of Texas	1,682	939	\$1,579,398
Upper East Texas	1,333	732	\$975,756
Upper Rio Grande	1,236	840	\$1,038,240
Weatherford Area	761	813	\$618,693
West Central Texas	839	957	\$802,923
<b>Totals / \$ Average / \$ Totals</b>	<b>54,181</b>	<b>\$849</b>	<b>\$45,882,336</b>

\*Source: Total/SCH for TSTC, Texas State Technical College Website, April, 2008; Total/SCH for Southeast Texas (Lamar University), Lamar University Website, April, 2008; for all other Community Colleges, TACC Survey, Last Updated 10/26/07, 50 of 50 colleges; tacc.org website.

Note: Total/SCH is:

- the average \$\$/SCH tuition and fees per credit hour for each Community College
- calculated for a student enrolled for 12 semester credit hours including one laboratory course
- rounded to the nearest dollar

\*\*Source: TEXAS EDUCATION AGENCY

Note: Masking of data may lead to slight discrepancies in enrollment counts.

## Potential Savings for the State of Texas Fall 2008

### ASSUMPTIONS:

1 semester credit hour (SCH) = 16 contact hours

Tech Prep students take a coherent sequence of courses totaling 3 high school units (or more)

On average, these 3 units can be articulated as 3 college courses or 9 SCH

$$\text{Savings to State} = \text{ConsortiumContactHours} \times \text{StateReimbursementRate} *$$

$$\text{ConsortiumContactHours} = 16 \text{ contact hours} \times 9 \text{ SCH} \times \text{Consortium Student Enrollment}$$

where Consortium Student Enrollment is Tech Prep Senior Enrollment 2007 - 2008

$$\text{StateReimbursementRate} = \$5.64$$

Consortium	TP Senior Enrollment **	Consortium Contact Hours	Total Potential Savings
Alamo	2,104	302,976	\$1,708,785
Brazos Valley	458	65,952	\$371,969
Capital Area	2,062	296,928	\$1,674,674
Central Texas	856	123,264	\$695,209
Coastal Bend	1,474	212,256	\$1,197,124
Concho Valley	764	110,016	\$620,490
Deep East Texas	639	92,016	\$518,970
East Texas	1,952	281,088	\$1,585,336
Global EDGE	2,068	297,792	\$1,679,547
Golden Crescent	612	88,128	\$497,042
Gulf Coast	11,594	1,669,536	\$9,416,183
Heart of Texas	666	95,904	\$540,899
North Central Texas	6,972	1,003,968	\$5,662,380
North Texas	879	126,576	\$713,889
Permian Basin	978	140,832	\$794,292
Rio Grande Valley	6,085	876,240	\$4,941,994
South Plains	1,786	257,184	\$1,450,518
South Texas	2,128	306,432	\$1,728,276
Southeast Texas	1,129	162,576	\$916,929
STAR (Middle Rio Grande)	590	84,960	\$479,174
Texoma	2,534	364,896	\$2,058,013
Top of Texas	1,682	242,208	\$1,366,053
Upper East Texas	1,333	191,952	\$1,082,609
Upper Rio Grande	1,236	177,984	\$1,003,830
Weatherford Area	761	109,584	\$618,054
West Central Texas	839	120,816	\$681,402
<b>Totals / Average / \$ Totals</b>	<b>54,181</b>	<b>300,079</b>	<b>\$44,003,641</b>

\*Source: State Reimbursement Rate, THECB Financial Index.

\*\* Source: TEXAS EDUCATION AGENCY

Note: Masking of data may lead to slight discrepancies in enrollment counts.

2007-2008  
TECH PREP Student Enrollments  
Grades 9 – 12

<b>CONSORTIUM</b>	<b>TECH PREP</b>	<b>TOTAL</b>	<b>% TECH PREP</b>
Alamo	5,203	106,522	4.9%
Brazos Valley	1,341	13,192	10.2%
Capital Area	4,647	74,054	6.3%
Central Texas	1,791	26,978	6.6%
Coastal Bend	3,286	29,621	11.1%
Concho Valley	2,862	7,741	37.0%
Deep East Texas	2,179	17,982	12.1%
East Texas	6,716	38,384	17.5%
Global EDGE	6,954	47,689	14.6%
Golden Crescent	2,741	10,045	27.3%
Gulf Coast	31,539	309,758	10.2%
Heart of Texas	1,395	17,046	8.2%
North Central Texas	19,707	226,664	8.7%
North Texas	2,274	10,663	21.3%
Permian Basin	2,635	21,025	12.5%
Rio Grande Valley	15,856	81,345	19.5%
South Plains	5,491	19,879	27.6%
South Texas	6,963	17,417	40.0%
Southeast Texas	2,785	19,854	14.0%
STAR	1,367	12,575	10.9%
Texoma	8,641	37,868	22.8%
Top of Texas	5,878	22,431	26.2%
Upper East Texas	4,371	15,195	28.8%
Upper Rio Grande	2,798	52,641	5.3%
Weatherford Area	3,381	15,896	21.3%
West Central Texas	3,629	16,011	22.7%
<b>TOTALS for State</b>	<b>156,430</b>	<b>1,268,476</b>	<b>12.3%</b>

Source: Texas Education Agency, PEIMS  
Note: Masking of data may lead to slight discrepancies in enrollment counts.

## Postsecondary Declared Majors Fall 2007

CONSORTIUM	INSTITUTION	Tech Prep Declared Major	Total Enrollment	% Tech Prep
Alamo	ACCD - Northeast Lakeview College	0	98	0.0%
Alamo	ACCD - Northwest Vista College	0	10,627	0.0%
Alamo	ACCD - Palo Alto College	179	8,021	2.2%
Alamo	ACCD - San Antonio College	785	21,439	3.7%
Alamo	ACCD - St. Philip's College	888	9,844	9.0%
Brazos Valley	Blinn College	76	14,582	0.5%
Capital Area	Austin Community College	4,883	31,822	15.3%
Central Texas	Central Texas College	1,455	8,290	17.6%
Central Texas	Temple College	350	4,787	7.3%
Coastal Bend	Coastal Bend College	412	3,113	13.2%
Coastal Bend	Del Mar College	2,696	11,138	24.2%
Concho Valley	HCJCD - Howard College	0	3,325	0.0%
Deep East	Angelina College	445	4,624	9.6%
East Texas	Kilgore College	348	5,135	6.8%
East Texas	Panola College	63	1,884	3.3%
East Texas	TSTC - Marshall	349	705	49.5%
East Texas	Trinity Valley Community College	967	5,569	17.4%
East Texas	Tyler Junior College	0	8,220	0.0%
Global EDGE	Collin County Community College District	332	19,944	1.7%
Golden Crescent	Victoria College, The	868	3,987	21.8%
Gulf Coast	Alvin Community College	376	4,091	9.2%
Gulf Coast	Brazosport College	265	3,751	7.1%
Gulf Coast	College of the Mainland	88	3,521	2.5%
Gulf Coast	Galveston College	1	2,044	0.0%
Gulf Coast	Houston Community College System	1,826	36,786	5.0%
Gulf Coast	Lee College	1,342	5,734	23.4%
Gulf Coast	Lone Star College - Cy-Fair College	922	11,751	7.8%
Gulf Coast	Lone Star College - Kingwood College	817	7,330	11.1%
Gulf Coast	Lone Star College - Montgomery College	752	8,798	8.5%
Gulf Coast	Lone Star College - North Harris College	1,726	10,834	15.9%
Gulf Coast	Lone Star College - Tomball College	895	8,132	11.0%
Gulf Coast	San Jacinto College - Central Campus	1,968	12,350	15.9%
Gulf Coast	San Jacinto College - North Campus	792	5,159	15.4%
Gulf Coast	San Jacinto College - South Campus	787	8,742	9.0%
Gulf Coast	Wharton County Junior College	465	5,892	7.9%
Heart of Texas	Hill College	95	3,395	2.8%
Heart of Texas	McLennan Community College	2,487	8,044	30.9%
Heart of Texas	TSTC - Waco	3,183	4,308	73.9%

North Central Texas	DCCCD - Brookhaven College	612	9,657	6.3%
North Central Texas	DCCCD - Cedar Valley College	322	4,477	7.2%
North Central Texas	DCCCD - Eastfield College	541	8,977	6.0%
North Central Texas	DCCCD - El Centro College	1,307	6,899	18.9%
North Central Texas	DCCCD - Mountain View College	442	6,462	6.8%
North Central Texas	DCCCD - North Lake College	450	9,090	5.0%
North Central Texas	DCCCD - Richland College	727	13,914	5.2%
North Central Texas	Navarro College	1,279	7,467	17.1%
North Central Texas	TCCD - Northeast Campus	1,763	12,924	13.6%
North Central Texas	TCCD - Northwest Campus	1,010	8,431	12.0%
North Central Texas	TCCD - South Campus	1,300	10,007	13.0%
North Central Texas	TCCD - Southeast Campus	1,233	11,056	11.2%
North Texas	Vernon College	449	2,814	16.0%
Permian Basin	HCJCD - Southwest Collegiate Institute	0	119	0.0%
Permian Basin	Midland College	502	5,720	8.8%
Permian Basin	Odessa College	536	4,580	11.7%
Rio Grande Valley	South Texas Community College	1,512	19,808	7.6%
Rio Grande Valley	Texas Southmost College	955	14,055	6.8%
Rio Grande Valley	TSTC - Harlingen	1,254	4,957	25.3%
South Plains	South Plains College	637	9,259	6.9%
South Texas	Laredo Community College	564	7,737	7.3%
Southeast Texas	Lamar - Institute of Technology	1,977	2,590	76.3%
Southeast Texas	Lamar State College - Orange	496	2,005	24.7%
Southeast Texas	Lamar State College - Port Arthur	452	2,279	19.8%
STAR (Middle Rio)	Southwest Texas Junior College	420	4,875	8.6%
Texoma	Grayson County College	794	3,717	21.4%
Texoma	North Central Texas College	1,304	7,400	17.6%
Top of Texas	Amarillo College	2,630	10,177	25.8%
Top of Texas	Clarendon College	0	1,117	0.0%
Top of Texas	Frank Phillips College	11	1,265	0.9%
Upper East Texas	Northeast Texas Community College	77	2,458	3.1%
Upper East Texas	Paris Junior College	556	4,286	13.0%
Upper East Texas	Texarkana College	240	3,916	6.1%
Upper Rio Grande	El Paso Community College District	2,823	22,567	12.5%
Weatherford	Weatherford College	442	4,478	9.9%
West Central Texas	Cisco Junior College	298	3,340	8.9%
West Central Texas	Ranger College	0	813	0.0%
West Central Texas	TSTC - West Texas	100	1,640	6.1%
West Central Texas	Western Texas College	0	2,095	0.0%
<b>TOTALS for State</b>		<b>63,898</b>	<b>587,244</b>	<b>10.9%</b>

Source: THECB,

<http://www.txhighereddata.org/approot/dwprodprt/majmenu.htm>

Retrieved on 05/13/2008